

## ENSURE THE SCALABILITY, RESPONSIVENESS AND RELIABILITY OF CRITICAL APPLICATIONS

Borland® SilkPerformer® is a proven, powerful and easy-to-use load and stress testing solution for optimizing the performance of business applications. Easy-to-create, accurate and realistic tests simulate tens or even tens of thousands of IT system users in a wide range of enterprise environments and platforms. The tests isolate issues and bottlenecks that could impact reliability, performance and scalability. Versatile visual scenario modeling enables any load scenario to be tested and compared – whether it involves a single, massive flood of requests to a website or the expected behavior of an enterprise application under daily load. Any bottlenecks are identified, then intuitive diagnostic and analysis capabilities help resolve the issue quickly, reducing test-and-fix cycles, accelerating time-to-market, and supporting critical release decisions related to application performance. To further reduce costs and promote more testing by more people, SilkPerformer removes the usage restrictions common in other solutions with its flexible, sharable deployment model.

### FEATURES AND BENEFITS

#### REDUCE COSTS, FEWER RISKS OF PERFORMANCE-RELATED FAILURES

SilkPerformer ensures the quality of business applications by measuring their performance from the end-user perspective—while also monitoring system performance—in a variety of scenarios under dynamic load conditions. SilkPerformer can reduce costs and minimize performance risks by helping you:

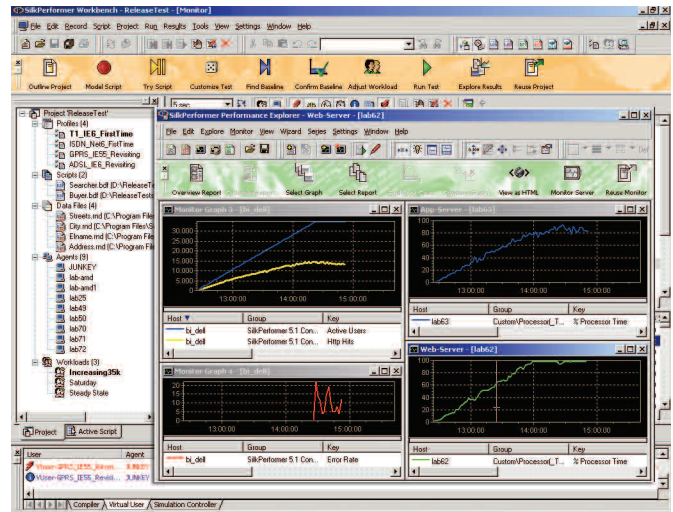
- Accurately assessing application performance, scalability and reliability characteristics before deployment
- Create realistic, reproducible load test scenarios to cover all critical use cases and requirements
- Isolate and resolve the root cause of performance problems in cross-platform systems quickly and easily
- Lower IT infrastructure costs through tuning and accurate capacity planning before deployment
- Provide automated test environment control through Load Test Resource Management (LTRM)

#### REALISTIC, LIGHTWEIGHT & ACCURATE SIMULATION

The innovative SilkPerformer technology minimizes the hardware resources needed per virtual user, enabling more and larger load tests using significantly less hardware than other popular solutions, reducing this often hidden cost. With remotely managed load agent machines, the performance of various configurations, user scenarios and network connections can be measured and contrasted. And, within a single load test, virtual users working with different Internet, middleware and database protocols—across varied computing environments—can be simulated. For internationalized applications that utilize Unicode®, SilkPerformer supports multibyte character sets and UTF-8. Client IP address simulation allows for the testing of load-balanced sites.

#### PROBLEM ISOLATION AND CORRECTION

Powerful end-to-end diagnostics capabilities help identify the root cause of performance problems, then take corrective action and report on activities.



Borland SilkPerformer executes load tests and monitors results in real time.

#### Client-Side Diagnostics

The unrivaled TrueLog™ technology of SilkPerformer provides visual front-end diagnostics from the end-user perspective. TrueLog visually re-creates the data that users provide and receive during load tests—for HTML pages this includes all embedded objects—enabling you to visually analyze the behavior of your application as errors occur during load tests. Detailed response timer statistics help you uncover the root causes of missed service levels before your application goes live.

#### Server-Side Diagnostics

With the addition of the Server Analysis Module, you can monitor server statistics and automatically correlate data with load test results to identify ongoing problems with your system's back-end servers, even those located behind firewalls.

#### Code-Level Root-Cause Resolution

For deep-down, code-level resolution of performance issues, Borland offers dynaTrace Diagnostics. Fully integrated, click-through drill down delivers a multi-tier performance breakdown to identify the root cause of performance bottlenecks, down to the offending line of code for both Java™ and .NET applications.

## FEATURES AND BENEFITS (CONTINUED)

### RELEVANT TESTING EARLY IN DEVELOPMENT

Dramatically reduce the cost of bugs in multi-tier enterprise applications, or in Agile development environments, by testing the functionality, interoperability and performance of remote application components under concurrent access early in the development cycle—even before client applications have been built. You can rapidly generate test drivers for Web services, .NET and COM+ server components as well as for Enterprise JavaBeans™ (EJB™) and Java RMI objects, by exploring them via a point-and-click interface. Alternatively, you can directly import JUnit/NUnit tests written by developers for concurrency tests. Or, build new test cases directly in Java and other .NET languages, such as C# and VB.NET, using the SilkPerformer Java Editor, Eclipse Plug-in or Microsoft® Visual Studio add-in.

### EFFICIENT TEST CREATION AND TEST CYCLES

SilkPerformer facilitates testing while taking no shortcuts in quality:

- Discover ease of use with the built-in step-by-step workflow wizards
- Create tests and executions with SilkPerformer's intuitive interface, or leverage the Eclipse IDE
- Test a wide range of enterprise environments with versatile, sharable, multi-protocol virtual-user types
- Easily customize tests with random user data—without programming a single line of code
- Reuse test cases in different environments and scenarios without changing test scripts
- Handle version control of test scripts via Borland® StarTeam® or any other SCCI-compliant tool

- Quickly create realistic workloads by using the integrated workload wizard
- Analyze load tests in real time to avoid invalid test results that require time-intensive test-case reruns
- Maximise the potential of your environment for load-test execution through Load Test Resource Management

### SUPPORTING TOMORROW'S TECHNOLOGY TODAY

Borland is committed to investing in supporting the needs for their customers, now and in the future. SilkPerformer now provides support for an even wider range of technologies than ever before. In addition to the previously supported technologies, SilkPerformer now also allows your application performance to be tested in the following areas.

- Remedy
  - Remedy ARS (6.3, 7.0.x, 7.1) Web Support
- Additional Protocols for MBCS/UTF-8 Support
  - Oracle Forms, Citrix
- Flex/AMF3 Support
- AJAX Enhancements
  - Automatic detection of AJAX requests (JSON/XML data format)
  - JSON/XML pretty printing, enhanced TLE rendering and visual customization/verification
- Technology Updates & Maintenance
  - SAPGUI 7.10
  - Oracle Applications 12
- CSV 2 TSD tool
  - Import external monitoring data that, for security reasons, cannot be directly monitored by SilkPerformer

## SYSTEM REQUIREMENTS

### Operating System

- Microsoft® Windows® 2003, Windows Vista, Windows XP™, Windows 2000

### Memory

- 512 MB RAM (1024 MB recommended)

### Networking

- 10 MBit Ethernet (100 MBit recommended)

## SUPPORTED ENVIRONMENTS

### Protocols and Interfaces for Load Testing

- HTTP(S)/HTML, Unicode (UTF-8), SOAP (XML), WAP2 (WTLS, MMS), i-mode, streaming media (MS, Real), Macromedia AMF, FTP, LDAP, MAPI, IMAP, SMTP/POP, SSL, CORBA (IOP), Java RMI (EJB/J2EE), .NET Remoting, (D)COM, Oracle Forms, Citrix ICA, ODBC, ADO, Oracle Call Interface (OCI), DB2 CLI, TCP/IP, UDP, Tuxedo ATMI, Jolt, Jacada, TN3270E, TN5250, and VT100/200+

### Open Interfaces

- .NET Framework
- Java Framework
- VB Framework
- COM Interface
- DLL Interface

### Packaged Applications (CRM/ERP)

- Remedy ARS
- SAP
- PeopleSoft
- Siebel
- Oracle Applications

### Real-time Server Monitors

- Windows and UNIX® system/network counters
- JMX
- SNMP
- Server counters for Microsoft IIS
- Apache™
- IBM® WebSphere®
- BEA® WebLogic®
- Oracle®
- IBM® DB2®
- Microsoft® SQL Server™

Borland is the leading vendor of Open Application Lifecycle Management (ALM) solutions - open to customers' processes, tools and platforms - providing the flexibility to manage, measure and improve the software delivery process.